

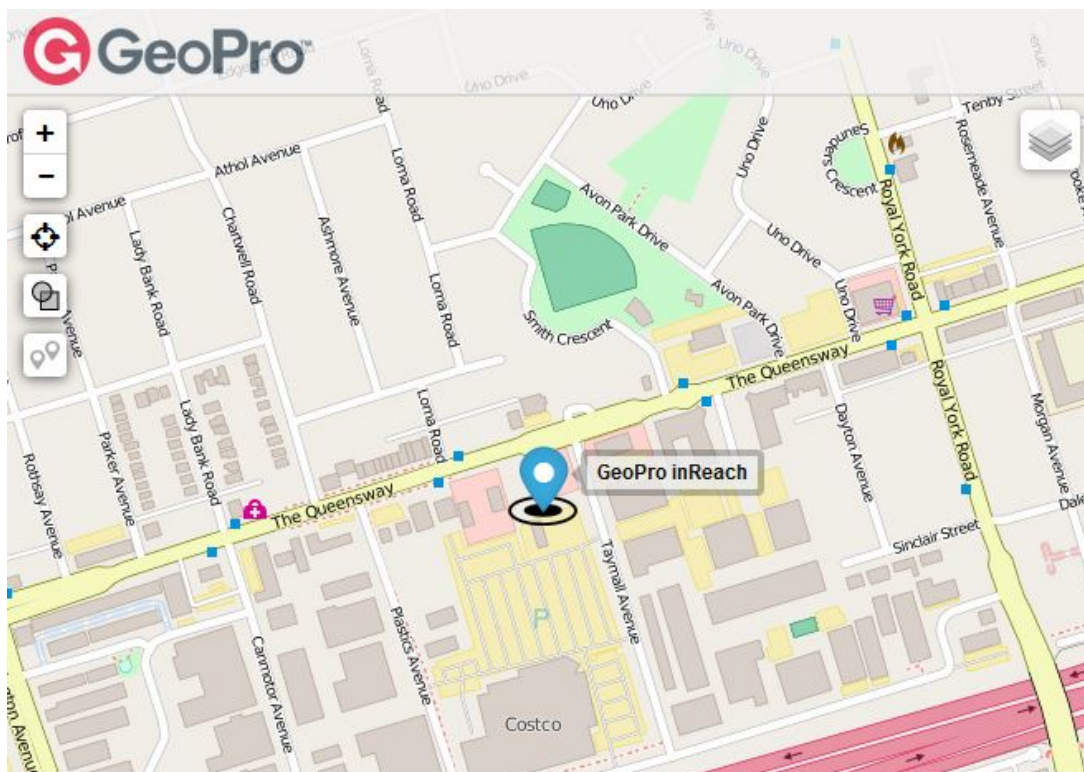
Home tab Overview for Users

Lu Parente - 2022-08-13 - in Home Tab / Map View

When viewing the Home tab while logged in as a User, you will be presented with the following:



Map: The map will automatically zoom to a level where it will display the most recently transmitted breadcrumb/ position for your assigned device.



Device: Your device page will be displayed giving you the ability to view your **Inbox**, **Device Log**, perform a **Manual Check-In** and configure aspects of your device.

Home Help Options Log Out

GeoPro inReach



GeoPro inReach
GeoPro inReach User
inReach SE

Inbox

Device Log

Manual Check-In

Configure

Configure: The configuration area allows you to view and configure specific aspects of your device such as your **Address Book** and **Canned Messages**. It also allows you to view your **Check-In Schedule** and **Event Notifications** which have been configured for you by an Administrator.

Home Help Options Log Out

< GeoPro inReach **Configure**

Device Details

Address Book

Event Notifications

Canned Messages

Check-In Schedule

Advanced