

Roadpost Support Center

Portal > Knowledgebase > GeoPro > GeoPro Web App > Web App for Administrators > Devices Tab > How-To > Viewing the Device Inbox from the Devices tab [GPv3]

Viewing the Device Inbox from the Devices tab [GPv3]

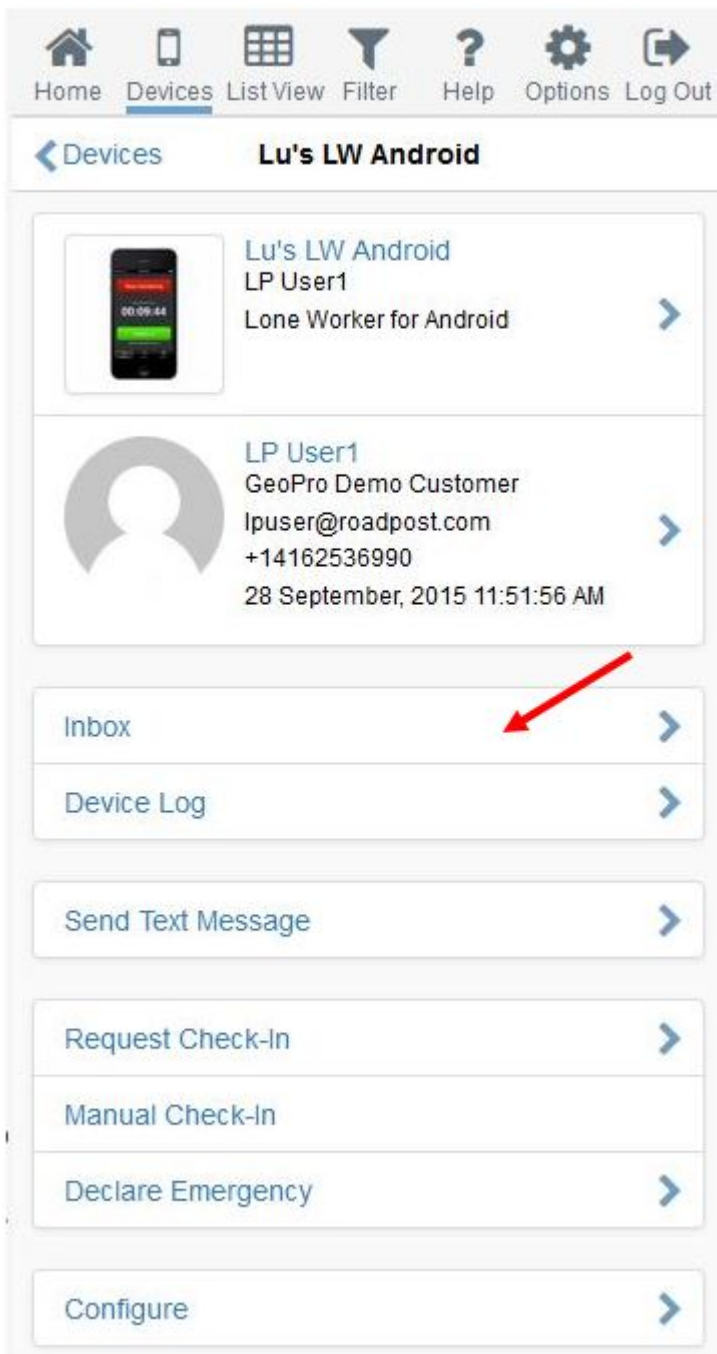
Lu Parente - 2015-11-10 - in How-To

The device **Inbox** displays all message and events transmitted from the device to the portal. This includes, text messages, position reports, check-ins, geofence crossings, monitoring start and stop, man detections, emergency declarations and cancellations, etc.

1. To view a device **Inbox**, navigate to the **Devices** tab and select the desired device.



2. The device page for the selected device will be displayed, select **Inbox** from the list.

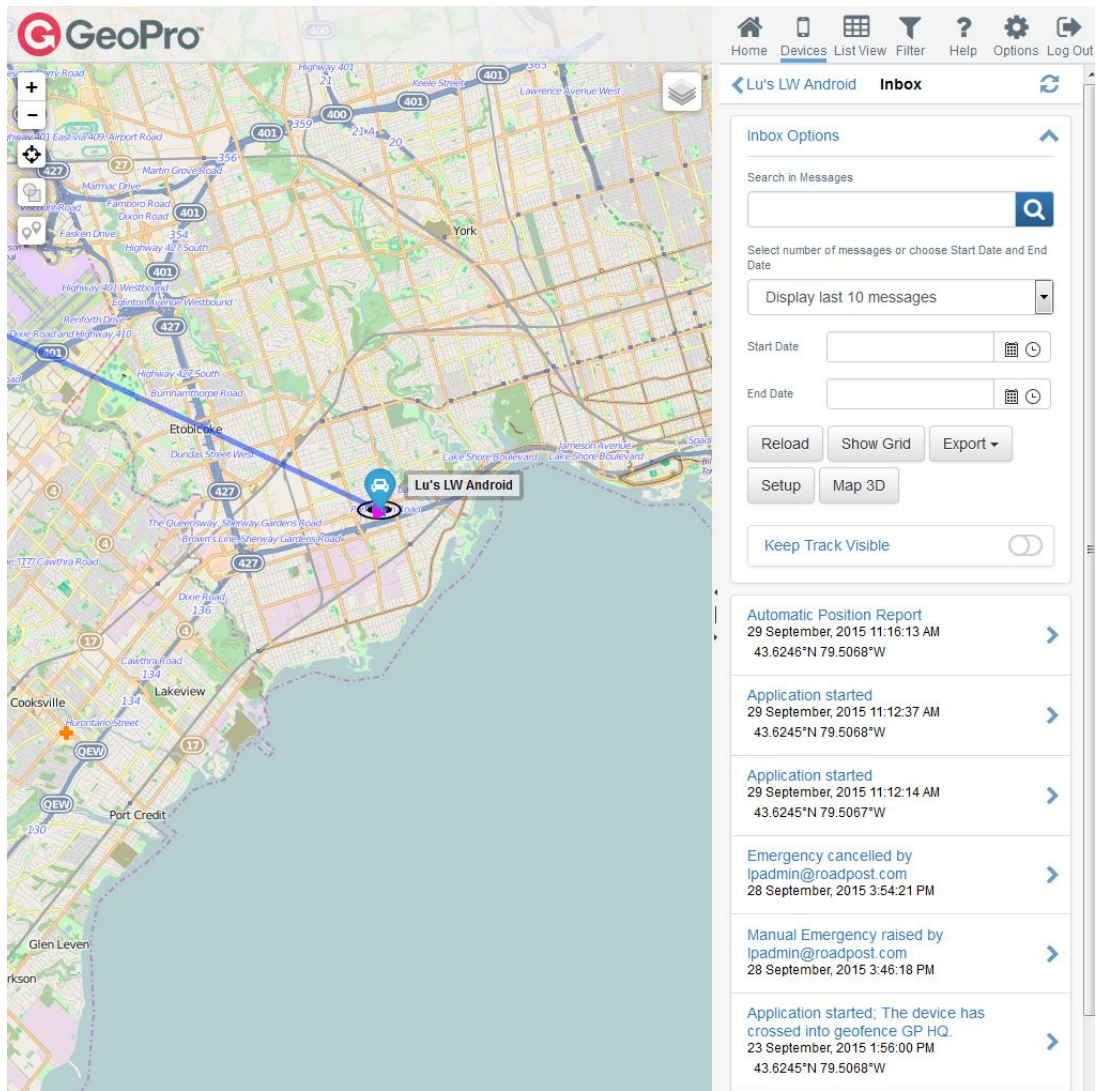


3. You are now viewing the **Inbox** for the selected device and the map has also filtered based on the most recently transmitted message or event.

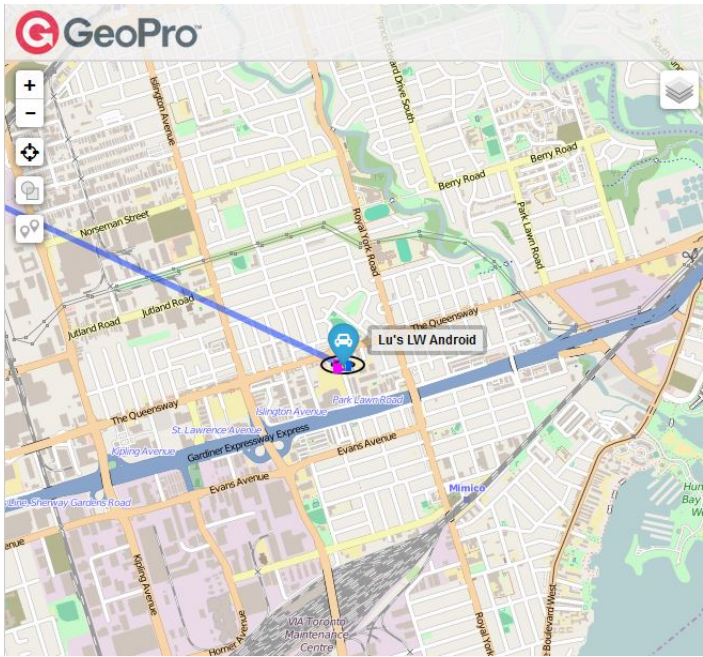
The screenshot displays the GeoPro application interface. On the left, a map shows a city area with a blue line indicating a route and a marker for 'Lu's LW Android'. The right side shows a list of events in the 'Inbox' section, including automatic position reports, application starts, emergency cancellations, and manual emergencies, each with a date, time, and coordinates.

Event	Date and Time	Coordinates
Automatic Position Report	29 September, 2015 11:16:13 AM	43.6246°N 79.5068°W
Application started	29 September, 2015 11:12:37 AM	43.6245°N 79.5068°W
Application started	29 September, 2015 11:12:14 AM	43.6245°N 79.5067°W
Emergency cancelled by ipadmin@roadpost.com	28 September, 2015 3:54:21 PM	
Manual Emergency raised by ipadmin@roadpost.com	28 September, 2015 3:46:18 PM	
Application started; The device has crossed into geofence GP HQ	23 September, 2015 1:56:00 PM	43.6245°N 79.5068°W
Application started; The device has crossed outside geofence GP HQ	22 September, 2015 9:19:54 PM	43.7343°N 79.8316°W
Application started	21 September, 2015 1:25:53 PM	43.6245°N 79.5067°W
Check In	21 September, 2015 1:24:05 PM	43.6245°N 79.5068°W
Cancel Emergency: User cancelled SOS	21 September, 2015 1:11:17 PM	43.6245°N 79.5068°W

4. You can also use the **Inbox Options** drop down to search, filter and export **Inbox** data.



5. Select any entry in the **Inbox** and the map will filter based on the location of where the message or event was transmitted. Press **Previous** or **Next** to continue viewing the breadcrumb trail and message/event details.



[Inbox](#) **Message Detail**

Lu's LW Android

[Previous](#) [Next](#)

MANUAL EMERGENCY RAISED BY
LPADMIN@ROADPOST.COM
Sent: 28 September, 2015 3:46:18 PM
Sent UTC: 2015-09-28T19:46:18.4547467Z
Recipients: Ludovico Parente
(parente@roadpost.com)