

Roadpost Support Center

Portal > Knowledgebase > GeoPro > GeoPro Web App > Web App for Administrators > Devices Tab > How-To > Viewing the Device Log from the Devices tab [GPv3]

Viewing the Device Log from the Devices tab [GPv3]

Lu Parente - 2015-09-30 - in How-To

The **Device Log** displays all messages and events transmitted from the portal to the device. This includes, portal initiated text messages, location requests, check-in requests, check-in reminders, changes to check-in schedules, when a schedule has been started or stopped, manual portal initiated check-ins, manual portal initiated emergency declarations and cancellations, etc.


1. To view a **Device Log**, navigate to the **Devices** tab and select the desired device.




2. The device page for the selected device will be displayed, select **Device Log** from the list.


Home **Devices** List View Filter Help Options Log Out

< Devices **Lu's LW Android**

 Lu's LW Android
LP User1
Lone Worker for Android >

 LP User1
GeoPro Demo Customer
lpuser@roadpost.com
+14162536990
28 September, 2015 11:51:56 AM >

Inbox >

Device Log > 

Send Text Message >

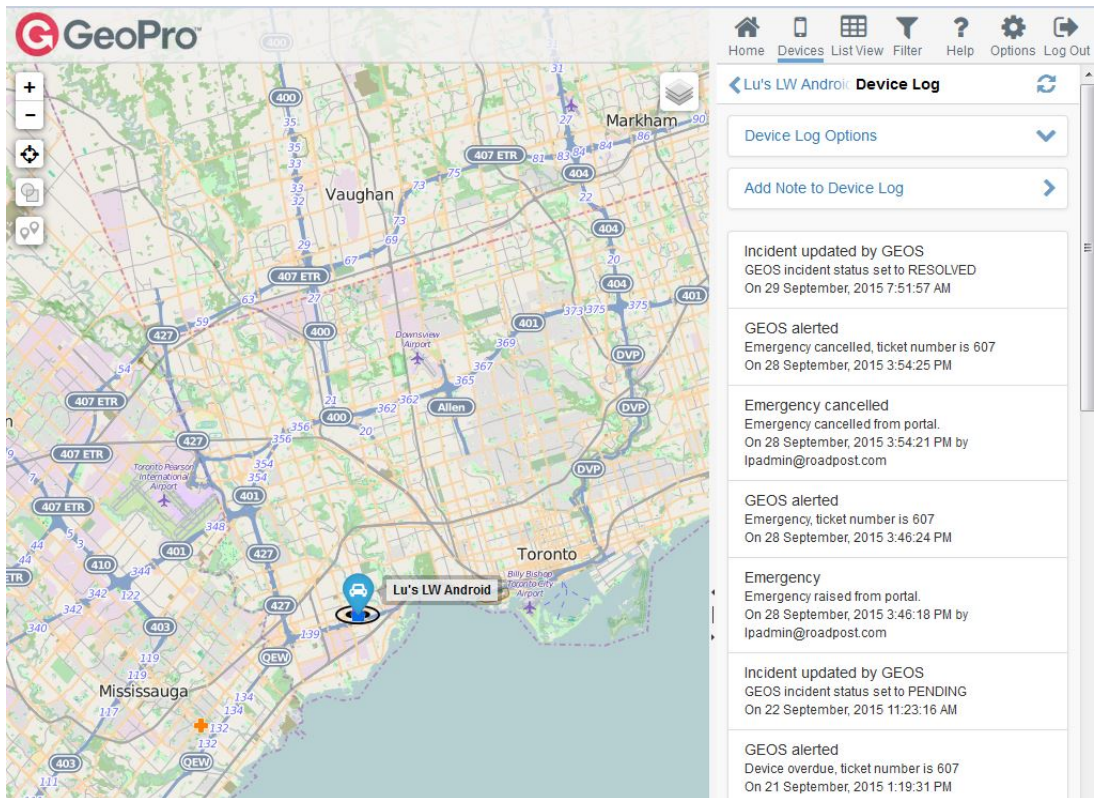
Request Check-In >

Manual Check-In

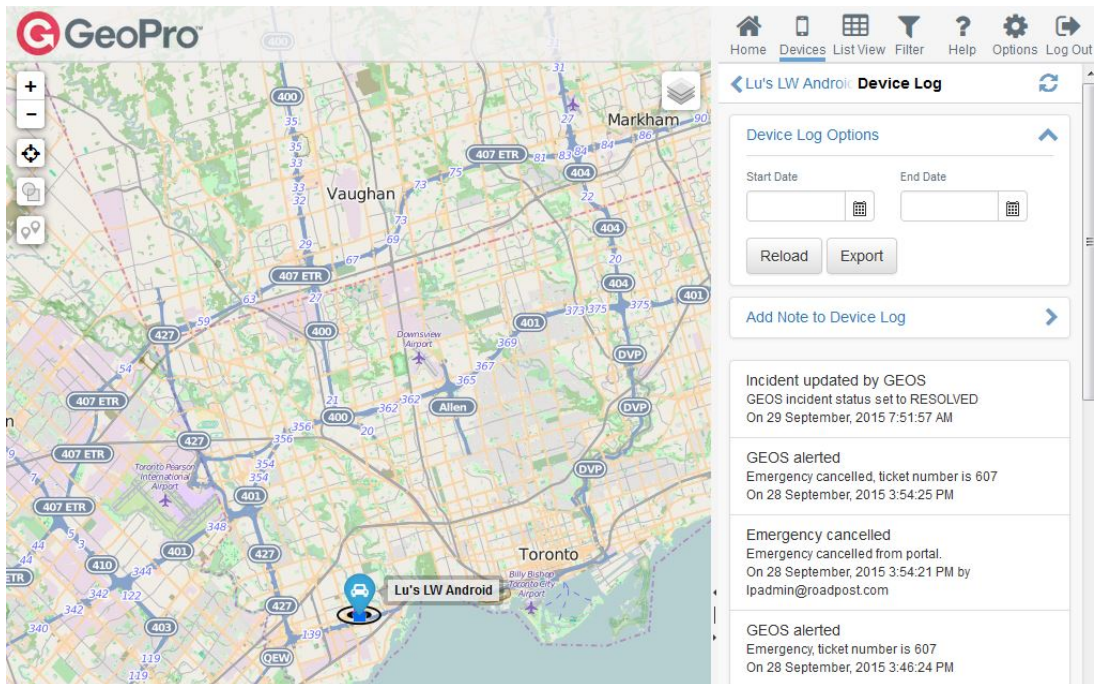
Declare Emergency >

Configure >

3. You are now viewing the **Device Log** for the selected device.



4. You can use the **Device Log Options** drop down to filter the **Device Log** by **Start Date**, **End Date** and also **Export** to CSV.



5. You can also add a note to the **Device Log** by selecting **Add Note to Device Log**. Once you've entered your notes, press **Add Note** and your notes will be saved to the **Device Log**.

Home Devices List View Filter Help Options Log Out

Lu's LW Android Device Log

Device Log Options

Add Note to Device Log

Incident updated by GEOS
GEOS incident status set to RESOLVED
On 29 September, 2015 7:51:57 AM

GEOS alerted
Emergency cancelled, ticket number is 607
On 28 September, 2015 3:54:25 PM

Emergency cancelled
Emergency cancelled from portal.
On 28 September, 2015 3:54:21 PM by
lpadmin@roadpost.com

Home Devices List View Filter Help Options Log Out

Device Log Add Note

Lu's LW Android

Note Text

Add Note Cancel